



Cassava Starch Project Proposal 项目方书

Project : Cassava Starch Processing Line

项目 木薯淀粉生产线

Model : SDCS-50

型号



Capacity : 240TonCassavaper 24Hour

产能 每 24 小时处理240 木薯

PPCode : KFSD20190623

项目编号



日期



报价方 开封市四达农产品设备有限公司

1. Process Description

工艺流程

2. Main Equipment Unit

主要单机

3. Technical Service

技术服务

4. Scope of Supply

供货范围

5. Commercial Part

商务部分

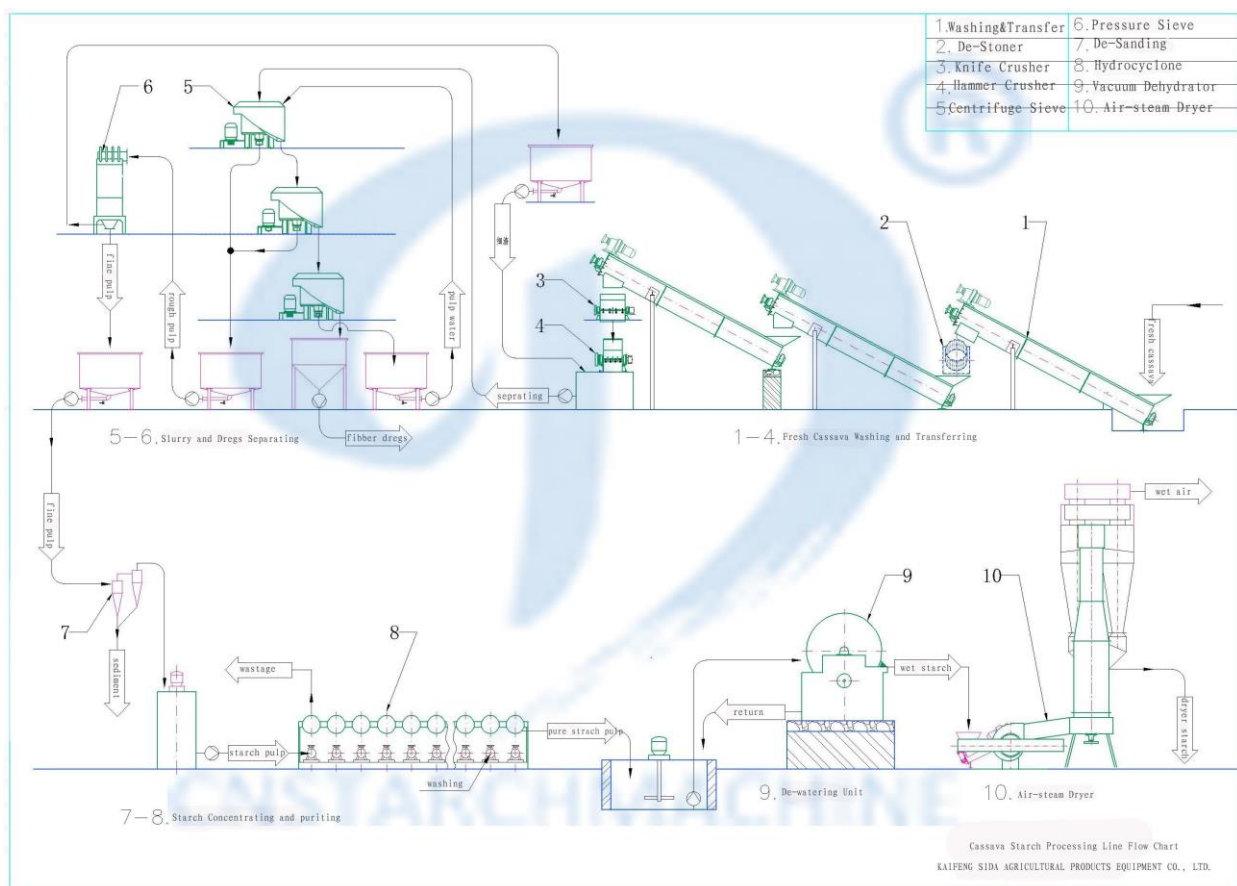
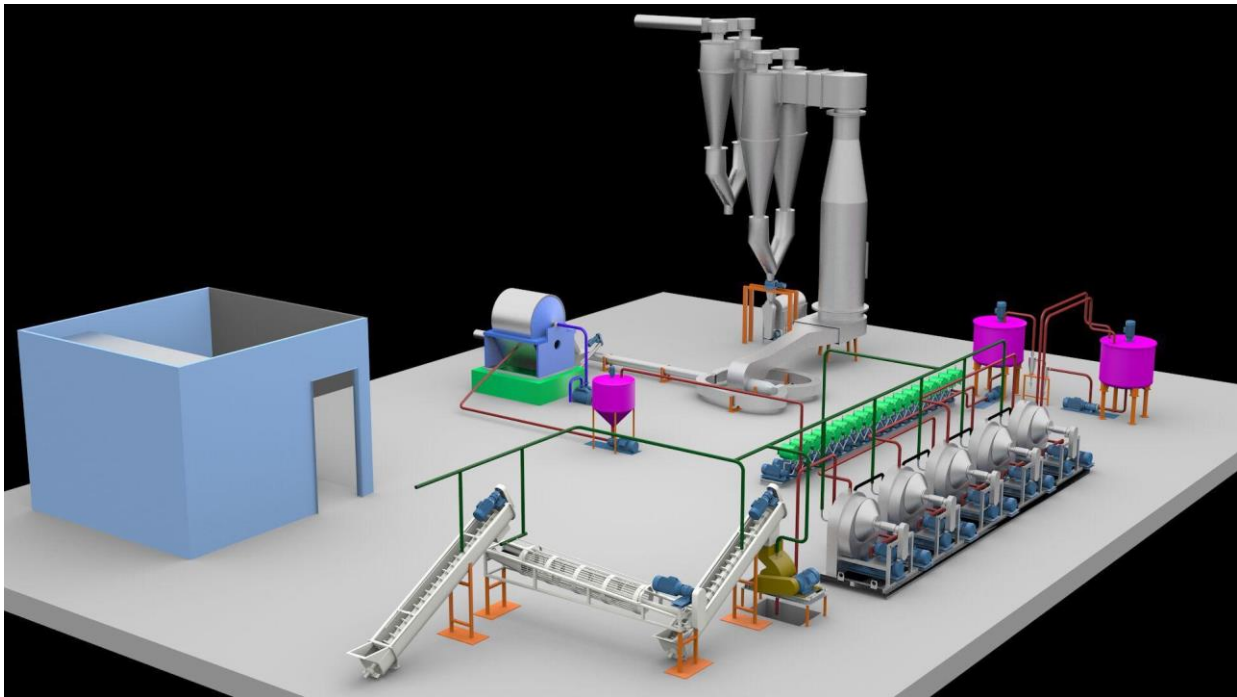
6. Company Profile

公司简介

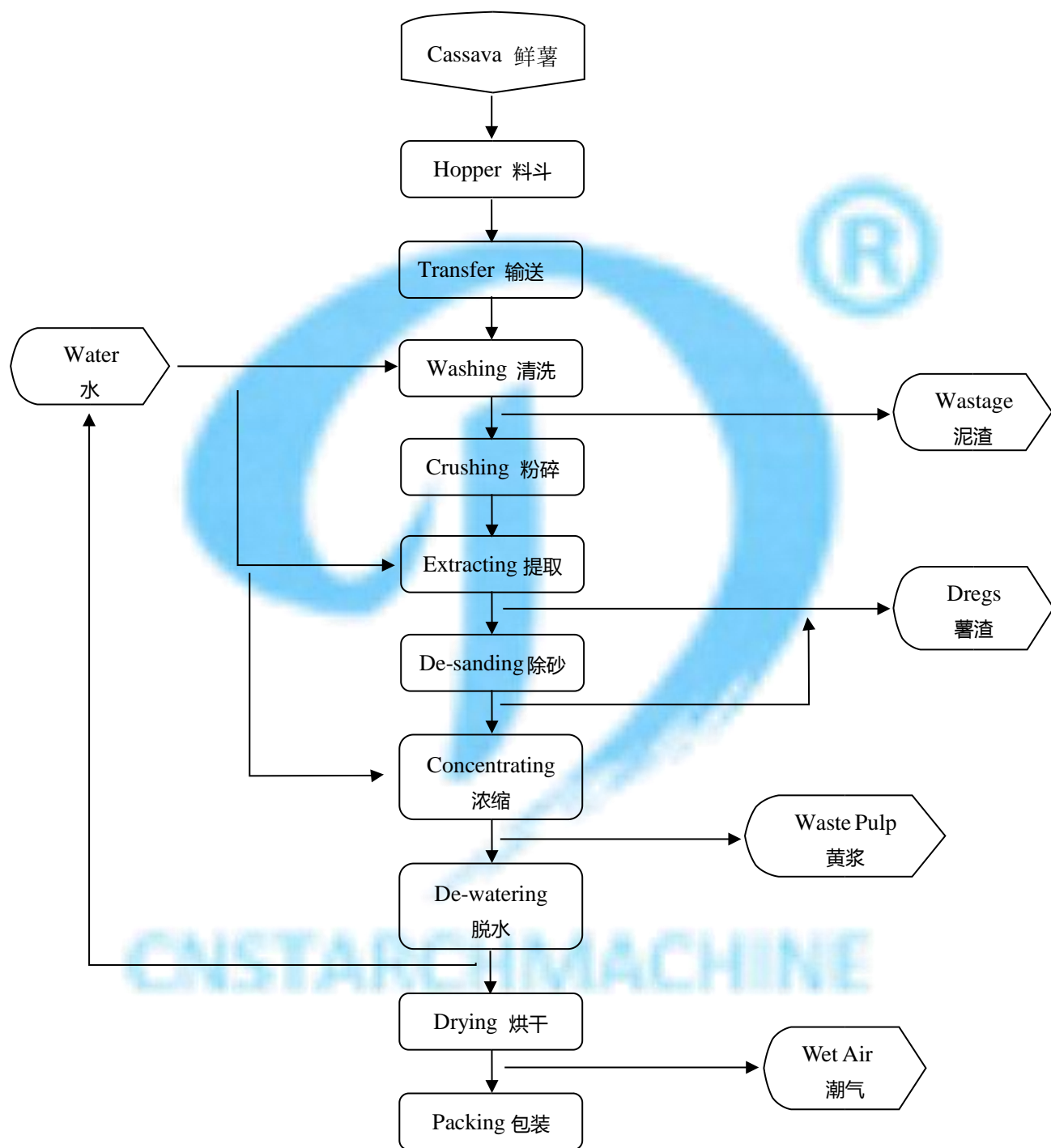
7. Part of Partners 合作伙伴

1. Process Description 工艺流程

Cassava Starch Processing Flow Chart



Cassava Starch Processing Flow Chart



2. Main Equipment Unit 主要设备单元

2.1. Material feeding hopper 原材料进料斗

The material feeding hopper is designed to reception fresh cassava, vibrancy electronic motor adopted to remove some of the impurities such as sand, peels, and woody tissues of cassava roots, etc, to ensure all the cassava fall down the belt conveyor, too. 该料斗设计用来接收新鲜木薯,料斗上面装有震动单元, 可通过震动去除鲜薯上的部分沙子, 薯根等杂质, 更加快木薯的下落速度。



When production begins, cassava roots or sand will be taken by a wheel loader out of raw material storage platform into the feeding hopper, which installed with vibrancy electronic motor at the bottom. After initially sand removing the material are dropped onto the belt and transfer them to the next unit- first time washing.

当机器开始运作的时候，用铲车将木薯铲进料斗里。料斗下面的震动电机可以初步将木薯上面的沙，薯根等进行分离。分离之后由底部落入输送带进行传输，进入下一个单元-首次清洗。

2.2. Cleaning system 清洗系统

The first time cleaning system is called Cage Washer, or Roller Cage. It mainly used to get rid of the sand and peels, muddy and sundries. There are two valve outlet at the bottom, all the sundries are collected to the bottom for periodical clean-up.

首次清洗系统又称清洗转笼或滚筒式清洗机，主要用于清洗沙、皮、泥、杂物等。在其底部有两个阀门出口，所有的杂质都对堆积在阀门出口处方便定期清理。

After the first cleaning, all the cassava material are sent to the U type clean machine, known as paddle cleaning machine or soaking clean machine. In the U type clean machine, the present stones and other heavy particles will be separated, this is second time cleaning.

首次清洗之后，木薯会被送到 U 型槽（又叫桨叶清洗机或者浸泡式清洗机）里面，在 U 型槽里，石块和其他一些重物质会被分离出去，这是第二次清洗。

01 First Cleaning



02 Second Cleaning



Features of Cleaning:设备特点

- ◆ Mainly used for cleaning of cassava; 主要用来清洗木薯
- ◆ The machine composed by U-type body, pro-pelled paddle and transmission; 由 U 型壳体，推进桨叶，传动机构组成
- ◆ Removing the muddy, sundries and peel etc, rotating by powerful paddles; 去除木薯类外层沾带的泥土沙石及薯皮 等杂物
- ◆ Low power consumption, large handling capacity and well cleaning; 动力小，处理量大，清洗彻底
- ◆ Stable operation and easy maintenance, etc. 设备运转稳定，操作方便，易于维修

2.3. Crushing system 粉碎系统

The cleaned cassava are transferred into the knife type crusher, the knife type crusher cut the roots into pieces and fall into the hammer crusher. The hammer crusher disintegrates the cassava pieces into a suspension of free starch granules, fibers, bounded starch and fruit containing soluble such protein , sugars, and minerals. During crushing process water is added for dilution.



Knife Type Crusher

洗净的木薯被送到旋刀破碎机里面，旋刀破碎机将木薯切成小块然后落进锤式粉碎机里面。锤式破碎机将木薯碎片分解成游离淀粉颗粒，纤维，包含可溶性蛋白质，糖和矿物质的结合淀粉和水果的悬浮液。在粉碎过程中加水稀释。



Hammer Crusher

Features of crushing:设备特点

- ◆ Mainly used for crushing of cassava;
主要用来粉碎木薯
- ◆ The knife crusher uses high speed to crush all the material to be pieces, the starch can be separated easily;
旋刀破碎机高速旋转将木薯切成小块，有利于淀粉更好的分离出来
- ◆ Hammer crusher disintegrates the cassava pieces into fine particles to improve the percentage free starch gained;
锤式破碎机将木薯块分解成细颗粒以提高获得淀粉的百分比
- ◆ Low energy consumption, high capacity; 耗电少，高产能
- ◆ Easy installation, operation and maintenance, etc. 便于安装,操作和维修

2.4. Extracting System 提取系统

The extraction principle is a combination of washing and centrifugal force. To ensure completely extracted the starch, three-level back-flush vertical centrifugal sieve adopted. 提取原理是清洗和离心力结合的产物，为了充分提取里面的淀粉，我们采取三级离心筛逆流洗涤分离。

Two water intake pipe to wash cassava dregs and starch pulp, high starch extraction. 两个进水管分别清洗薯渣和淀粉浆,提高淀粉提取率。



Features of extracting:设备特点

- ◆ Mainly used for extraction the cassava starch; 主要用来提取木薯淀粉
- ◆ All stainless steel material design, completely closed combination structure, resulting in no bacteria and conforming to food hygiene requirements;
不锈钢材料设计，全封闭式结构，保证细菌无法滋生，符合食品卫生要求
- ◆ Advanced surface treatment technology ensuring good looking and resistance of oil and dirt ;
设备外观采用先进的表面处理工艺，美观大方，耐油耐脏
- ◆ Large handling capacity, stable operation, high starch extraction rate; 处理量大，操作稳定，淀粉提取率高
- ◆ Counter current washing and separating, less water consumption; 采用了逆流洗涤分离方式，更加节水
- ◆ Easy installation , operation and maintenance, etc. 便于安装,操作和维修

2.5. De-sanding System 除砂系统

The de-sanding unit utilize the principle of centrifugal force is used for remove sand and coarse particles such as fiber or minerals from the starch pulp.

除砂单元利用离心力的原理去除淀粉浆里面的沙粒和粗糙颗粒，比如纤维和矿物质等。



2.6. Concentrating System 浓缩系统

The concentrating system mainly used for concentration, purification, separation, adopted the world latest combination structure ensure more stable system working.

浓缩系统主要作用是对淀粉进行浓缩，进化和分离。采用世界最新的浓缩，净化和分离一体组合式结构，能够保证系统工作更加稳定。

Adopting the world latest combination structure integrating the concentration, recovery and washing stages, to ensure more stable system working, more reliable control, higher product quality, less water consumption, “zero” starch loss in the over flow from the recovery.

采用了最新的浓缩、回收和洗涤一体组合式结构，能够保证系统工作更加稳定，控制更可靠，产品质量更高，耗水更少，并可达到回收溢流几乎不跑粉的目标；

- New channel type structure cyclones are used for concentration and washing. The optimum sealing structure ensures no leaking between compartments. The hinged front cover can be quickly opened. The cyclone block can be quickly taken out for easy washing and maintenance.

浓缩及洗涤采用新型的流道式板式旋流器，最佳的密封结构保证各腔室不泄露，链接前盖可快速开启，旋流管座可快速取出，清洗维护更方便；

- High outlet concentration up to 22°Be, higher washing efficiency, less stages required, better product quality and lower power consumption.

出料浓度高(22°Be)、洗涤效率高、级数要求更少、产品质量更佳、能耗更低；

- Single cyclones made of high wear-resisting engineering plastics material, longer life time. 旋流管高耐磨工程塑料制造，使用寿命长；

- Use mid-high pressure to obtain highest washing efficiency. 使用中高压，洗涤效率更高；

- Adopting special designed centrifugal pump and special for starch processing. Stable output and better working status. 采用特殊设计的离心泵，专门应用于淀粉加工。输出特性稳定，工作状态更佳。



2.7. De-watering unit 脱水单元

Specially designed and fabricated filter screen ensures higher throughput rate and efficiency; 特殊设计和制造的滤网能够保证更高生产量及效率；

Open drum design results in consistent and the speed of rotating drum can be adjusted, to ensures less water content of dewatered product;

全中空转鼓设计使真空度保持一致及转鼓转速可调，确保脱水后的淀粉含水量更低；

Robust structure, all in stainless steel 304 except the frame. 稳固的机架，除设备支架部分玩，其余所有材料均为304 不锈钢。

2.8. Drying unit 干燥单元

Specially designed drying pipe to reduce the equipment height as much as possible while ensuring high drying efficiency, easy to install and maintenance;

特殊设计的干燥管在达到高效干燥效果的情况下，尽可能降低设备高度，便于安装及维修；



Combining air-steam crash with vortex flash vaporization two kind drying theories design to reduce the drying temperature as much as possible while ensuring high drying efficiency , for keep the starch native characteristic and quality.

采用气流对撞和涡流闪蒸干燥两种干燥理论结合的设计,在保证高效干燥效果的情况下,尽可能低的降低烘干温度来保持淀粉的原始特性和质量。



3. Technical Service 技术服务

3.1. Supervision of erection, commissioning, and start-up 指导安装、调试、试运行

Seller should be responsible for dispatching the experienced technical personnel for on site technical supervision of installation, commissioning, and give the warranty for the equipment performance. 卖方将负责派有经验的技术人员到买方合同设备现场进行指导安装调试;并对设备性能进行担保。

Within the scope of supervision of start-up, supplier shall provide the following supervisory service:

在指导试运行服务范围内,供货方提供下列服务:

- A. Advise the Buyer's concerned employees of the operation procedure and maintenance of the plant. 指导买方工作人员操作和维护车间。
- B. Set the time schedule of the installment giving details on the sequence of start-up of individual parts of the plant. 建立时间顺序表,显示工厂各部分首次起动的顺序。
- C. Advise on the mode and method of starting-up of individual plant units. 指导起动工厂各单元的模式和方法。
- D. Advise the Buyer on the initial production run of the plant. 指导首次生产。
- E. Instruct and train Buyer's staff on details of normal production conditions of the plant, and special operating conditions and emergencies. 对工作人员进行工厂正常生产状态、特殊运行状态和紧急状态的指

- F. Supervision of the daily activities of the Buyer's operating staff until the plant is ready for the trial run. 当工厂准备好试运行, 指导买方操作人员的操作。
- G. Supervision of the Buyer's operating staff in the performance run test. 在性能测试期间指导买方操作人员的操作。
- H. Seller will be responsible for giving the detailed explanations for the technical documentations, drawings, operation manuals, equipment performance and relevant notice for the buyer's technical personnel, and answer & solve all technical questions.
卖方技术人员将对技术文件、图纸、操作手册、设备性能和注意事项进行详细正确的讲解, 并回答和解决买方提出有关合同方面的技术问题。

Man-day specified in this section should meet all requirements from installment of whole production line, commissioning, test-run, performance test up to final acceptance. The buyer should service charge **US\$100/day** for each technocrat. Also buyer should take charge of the round trip air tickets and accommodation for the technician.

卖方的技术服务人员确保整条生产线安装、调度、试运行、性能测试直至最终合格产品及验收全部工作需要。买方需支付技术服务费用每人每天 150 美金。并且支付技术人员的吃住和往来飞机票。

3.2.Training of personnel 人员培训

- a) Seller shall send the qualified technical personnel to provide effective training for the buyer 2 months ahead. And technical training center is set in the End-user's place.
卖方派有资格的技术人员指导并制定培训内容, 提前两个月将培训内容和计划提供给买方认可, 并对买方技术人员进行培训, 技术培训的地点为最终用户现场。
- b) Seller will guarantee that after the technical training the technical personnel from buyer can skillfully operate & maintain the equipment, and skillfully adjust the technology & solve basic technical problems in time. 通过技术培训, 确保买方的技术人员能够掌握操作和维修技术, 能熟练地调整工艺和及时处理各种故障。
- c) The main training will adopt the terms of on-site training in the Client's plant, i.e the trainees will participate in the pre-operational activities of the plant. That includes the final erection activities, dummy runs, start-up and plant operation as well as necessary practices concerning equipment operation. This training will be completed by seller's supervisory personnel.
在试运行培训之前, 卖方为买方提供前期异地实践性培训。受培训人员在安装完成、模拟运行、试运行和正常运行期间学习必要的关于设备和操作方面的技能。此项培训工作将由卖方安装、试车和试运行总负责人在安装和试车阶段进行。

3.3. After sales service 售后服务

- a) The warranty period of the equipment and materials of the contract plant supplied by the Seller shall be 12 months after the date of acceptance of the contract plant by the Buyer, but not later than 18 month from the date of delivery or re-delivery.
卖方将在合同项目验收日后 1 个生产期即 12 个月内提供免费技术服务并跟踪进行持续的技术更新服务, 但日期不迟于交货后 18 个月。

- b) Within the validity period of the contract, the Seller shall answer the questions from the Buyer in connection with the design and technical items in the supply scope of the contract and provide the relevant technical documentation to the Buyer free of charge.

在合同质保期内，卖方应及时答复在合同范围内相关设计好技术问题等内容，并免费提供给买方相关的技术文件。

- c) If any defective equipment and materials are found, the Buyer is obliged to notify the Seller within 1 week by fax and the Seller shall give a reply within 1 week.

如发现设备和材料缺陷，买方应立即在一周之内通过传真告知卖方，卖方应在一周之内给予回复。

4. Scope of Supply 供货范围

No. 序号	Description 设备描述	Unit 单位	Qty. 数量	Spec. 型号	Material 材质	Kw/Pc 单机功率	Vender 供货商
A	Feeding hopper and washing unit 原料入料斗和清洗单元						
A1	Feeding hopper 原料入料斗	set	1	SS-50	Carbon Steel	4Kw	Sida
A2	Scraper conveyor 刮板输送机	set	1	800*8000	Carbon Steel with motor	3Kw	Sida
A3	Roller washer 清洗转笼	set	1	GXJ--950	Inner Stainless Steel with motor	5.5Kw	Sida
A4	Scraper conveyor 刮板输送机	set	1	800*10000	Carbon Steel with motor	3Kw	Sida
A5	Roller washer 清洗转笼	set	1	CSXJ-950	Inner Stainless Steel with motor	5.5Kw	Sida
A6	Distributor Screw conveyor	set	1		Stainless	4Kw	Sida

	分配螺旋输送机				Steel with motor		
A7	U type cleaning machine 桨叶清洗机	set	1	CSXJ-900	Carbon Steel with motor	11Kw	Sida
B	Crushing Unit 粉碎单元						
B1	Chopping machine 切断机	set	1	QD50-18	Out Stainless Steel with motor	22Kw	Sida
B2	铰磨机 Rasper	set	2	CM-400	Out Stainless Steel with motor	110Kw	Sida

B3	Self-priming non-blocking pump 自吸无堵塞泵	set	2	ZW80-40-25	Stainless Steel with motor	15Kw	Sida
B4	Transfer Pump 螺杆泵	set	1	G70-1	Stainless Steel with motor	11Kw	Sida
C	Extracting Unit 提取单元						
C1	Vertical centrifugal sieve 立式离心筛	set	6	LIF-810	Stainless Steel with motor	90Kw	Sida
C2	Pressure sieve 压力曲筛	set	6	QS-710	Stainless Steel		Sida
C3	Transfer Slot 中转槽	set	4	2M ³	Stainless Steel		Sida
D	De-sanding unit 除砂单元						
D1	De-sanding machine 除砂器	set	1	CQ-30	Stainless Steel with motor	18.5Kw	Sida
D2	Storage Tank 中转罐	set	1	15 M ³	Stainless Steel with mixer	2.2Kw	Sida
E	Concentrating Unit 浓缩单元						
E1	Concentrate hydro cyclones 浓缩旋流器	set	4	YTX-191	Stainless Steel with motor	88Kw	Sida
E2	Concentrate hydro cyclones 浓缩旋流器	set	2	YTX-146	Stainless Steel with motor	37Kw	Sida
E3	Purified hydro cyclones 净化旋流器	set	4	YTX-116	Stainless Steel with motor	74Kw	Sida
E4	Purified hydro cyclones 净化旋流器	set	8	YTX-81	Stainless Steel with motor	88Kw	Sida
E5	Transfer pump 中转泵	set	5		Stainless Steel with motor	55Kw	Sida
F	De-watering unit 脱水单元						
F1	Vacuum dehydrator 真空脱水机	set	1	ZZG-18	Half Stainless Steel	45Kw	Sida

No. 序号	Description 设备描述	Unit 单位	Qty. 数量	Spec. 型号	Material 材质	Kw/Pc 单机功率	Vender 供货商
1	Fiber storage tank	set	1		Stainles	2.2Kw	Sida
F2	Vacuum pump 真空泵	set	1				Sida
F3	Vacuum tank 真空罐	set	1				Sida
F4	Scraper 刮刀	set	1				Sida
F5	Frame, pipes and accessories 机架、管道及附件	set	1				Sida
F6	Wet starch slot 湿淀粉中转槽	set	1	ZZC-10	Stainless Steel with motor	4Kw	Sida
G	Air steam flash dryer 烘干机	set	1	QZWG-50	Stainless Steel	99Kw	Sida
G1	Air filter 空气过滤器	set	1		Stainless Steel		Sida
G2	Stream heat exchanger 热交换器	set	1		Stainless Steel		Sida
G3	Feeder 上料机	set	1		Stainless Steel		Sida
G4	Dryer fan 烘干风机	set	1		Stainless Steel		Sida
G5	Vortex chamber 涡流室	set	1		Stainless Steel		Sida
G6	Closed fan 闭风机	set	1		Stainless Steel		Sida
G7	Dryer powder sieve 成品筛	set	1		Stainless Steel		Sida
G8	Dryer tower 烘干塔	set	1		Stainless Steel		Sida
G9	Cyclones 沙碓笼	set	1		Stainless Steel		Sida
H	Auto Packing machine 包装机	自动 set	1	4~8bag/min	Stainless Steel	4Kw	Sida
J	Electric control system 电气控制系统						
J1	Distribution cabinet 配电柜	set	8		Plastic Steel		Sida
J2	Pipe , valve and cable 管道阀门及电缆线	Set		National Standard	Plastic steel		Sida

	渣子储存罐			8m ³	s steel with motor		
2	Screw pump 螺杆泵	set	1	G70-1	Stainless steel with motor	11Kw	Sida
3	Press filter 板框压滤机	set	3	60m ³	Polystyrene	9Kw	Sida
4	Screw conveyer 螺旋输送机	set	3	LSS35	Stainless steel with motor	6Kw	Sida
5	Floral Leaf conveyer 花叶输送机	set	1	HLSS40	Stainless steel with motor	3Kw	Sida
6	Hammer-type crusher 渣子锤式破碎机	set	1	XD48-24	Out stainless steel with motor	15Kw	Sida
7	Pipe bundle drier 管束干燥机	set	2	MKDB-250	Out stainless steel with motor	37Kw	Sida
8	Distribution cabinet 配电柜	set	2	National standard	Plastic Steel		Sida
9	Pipe , valve and cable 管道阀门及电缆线	Set		National Standard	Plastic steel		Sida

Note:

1. The Seller keeps right to revise design according to actual situation. 卖方有权根据实际需要修改配置
2. Washing parts are carbon steel, others are stainless steel, or make as customer's request.
清洗部分为碳钢，其余材料均是不锈钢，也可根据客户需求定做。
3. Lab instruments not including. 实验室设备未包含。
4. Installation and materials not included, if need can be discussed later. 安装和安装材料不包含，如需要
可在随后讨论。

5. Commercial Part 商务部分

5.1 Price 价格

The price for the delivery of the equipment and service according to the List of Scope of Supply amounts to **NGN671,600,000.00 ONLY**. 包括在供货范围内的设备和服务的价格为：美元整。

Input Capacity	240Ton per 24Hours
Containers Loading	8 * 40HQ

Factory Dimension	100x30x15m
Power	861.02Kw/h
Water	750tons/day
Steam	40tons/day

5.2 Terms of payment 付款方式

70% T/T of the contract value to be paid upon signature of the contract. 合同签署之后预付 30%的定金

30% T/T of the contract value to be paid after machine commissioning inspection by the buyer at the vender's workshop.
买方在卖方车间进行机器调试合格之后，付签署合同金额的 70%余款

5.3 Time of delivery 发货时间

Under the condition that Buyer provides in good time all the necessary import licenses and transfer permits, civil construction terminated in time, and considering the present manufacturing and transport conditions, the rough delivery time, calculated from the date of entering into force of the contract up to delivery from Kaifeng Workshop will be about 90 days.
在买方按时提供所有必须的进口和运输许可、土建及时完工的情况下，并考虑到现有的制造和运输条件，从合同开始生效到设备出厂的时间约为 90 天。

The contact will come into force when all the following conditions are fulfilled:
合同在满足以下所有条款之后开始生效

- b) Signing of the contract
合同签署
- c) Receipt of the down payment 收到预付款

5.4 Warranties 质保期

Supplier will give the customer mechanical warranty for the equipment and will also guarantee the plant capacity, the quality of the end-product and the essential consumption figures based on the figures stated in the design Basis. The mechanical warranty shall be 12 months after start-up of the system, but not later than 18 month after the date of delivery.

供货方对所供设备做机械性能保证，并根据设计基础中的数据对工厂的生产能力、成品质量和基本能耗指标做出保证。机械性能质保期为系统开机后 12 个月，但不迟于设备发货之日起 18 个月。

5.5 Exclusions 未包括项

Not included in our quotation are those services and products not specially mentioned, mainly, but not limited to:

所有未明确在本报价内列出的供货服务不包括在本报价内，主要有但不限于下列各项：

- Transport insurance. 运输保险
- Taxes and custom duties 关税及清关费用

- Ocean and transportation of equipment from port to site. 海运及港口至现场的运输
 - Insurance for erection and commissioning. 安装和调试保险
 - All utilities and raw material for testing, commissioning and operating the plant. 工厂调试、试机和运行所需设施和原材料
 - All pipe work outside Battery Limits and connecting pipe work between unit. 界区以外的所有管路及单元之间的连接管路
 - All services and supplies outside Battery Limits. 界区以外的所有供货和服务
 - Authorities' approval for the construction and operation of the plant. 工厂建设和运行的官方批准
 - Electrical installation and installation material outside Battery Limits. 界区以外的电气设备和安装材料
 - Transformers and sub-stations 变压器及配电站
 - Hook-up from power line to transformer (depending on distance). 到变电站的接线（取决于距离）
 - Water-well drilling and pumps 打水井和泵
 - Boiler and boiler equipment 锅炉及锅炉设施
 - Roads, fences, other infrastructure not otherwise specified. 未列明的道路，围墙和其他基础设施
 - Storage facilities/tanks for chemicals. 化学品和存储设施/罐
 - First aid and medical services. 急救和医疗服务
 - Effluents treatment equipments 污水处理设备
 - Pure water treatment system. 净水设备
 - Water and electricity for construction purposes. 施工用水用电
 - Civil engineering. 土建设计
 - Civil construction. 土建施工
 - Indoor and outdoor lighting. 室内外照明
 - Lightning protection. 防雷设施
 - Fire fighting equipments. 消防设施
-

5.6 Secrecy 保密条款

The information contained in this proposal includes confidential technical information and has been prepared and submitted in confidence. Therefore, it is understood that all information involved shall be used internally and solely for the specific purpose for which it has been delivered. No information contained herein shall be published or distributed or used for purpose other than aforesaid before our prior written consent. Otherwise , we reserve the right to pursue their legal responsibilities.

由我方编制并提交的这份方案当中含有我公司商业机密数据。因此我方认为，本报价应在其所提交的目的范围内使用，且本报价的任何部分或者所包含的任何数据未经本公司事先书面许可不得出版、向第三方提供或用作其他目的。否则我公司有权追究其法律责任。 6.

Company profile 公司简介



Henan Lima Agricultural Products Equipment Co Ltd. is based on manufacturing, researching & developing the complete set of cassava products deeply processing equipment since 1994. Registered capital of RMB6.6millions, covering an area of 33,335 square meters, with an annual production value of RMB 50 millions. Our company had got **15pcs national patents**, and taken the accreditation of **ISO9001 and BV**, etc.

Supplying perfect sale service & technology supporting, of cassava processing plants are popular in the whole world, and our cassava processing plants have sold to different counties, such as, Cambodia, India, Indonesia, North Korea, South Africa, Uzbekistan, Syria, Russia, Bulgaria, Algeria, Bangladesh, Pakistan, Vietnam, Thailand, Mongolia, etc.

7. Part of Partners 合作伙伴

Domestic Partners			
No. 序号	Name of Partners 客户名称	Project 工 程	Year 日 期

1	Kaifeng County Zhongbang Science & Technology Ltd. 开封县众邦肥业有限公司	Sweet potato starch processing line 红薯淀粉生产线	2010
2	Hunan Yueyang Rongtai Starch Co., Ltd. 湖南岳阳蓉泰淀粉有限公司	Sweet potato starch processing line 红薯淀粉生产线	2012
3	Henan Fengqiu Central Plain Starch Co., Ltd. 河南省封丘县中原淀粉有限公司	Wheat starch processing line 小麦淀粉生产线	2013
4	Tongxu Sihai Starch Plant 通许县四海淀粉厂	Wheat starch processing line , skin machine 小麦淀粉生产线，面皮机等。	2014
5	Ningxia Guyuan 50 Plants 宁夏固原地区 50 个厂家使用我公司设备	Sweet potato starch processing line 红薯淀粉生产线	2014
6	Sichuan Starch Co., td. 四川淀粉设备有限公司	Wheat starch processing line 小麦淀粉生产线	2015
7	Chongqing Wanzhou Zeshi Agricultural Co., Ltd. 重庆万州择实农产品公司	Sweet potato starch processing line 红薯淀粉生产线	2017
8	Anhui Chuzhou Starch Production Co., Ltd. 安徽滁州淀粉生产公司	Sweet potato starch processing line 红薯淀粉生产线	2017

Abroad Partners

No. 序号	Name of Partners 客户名称	Project 工 程	Year 日 期
1	Russia- Novosibirsk OAO Company 俄罗斯新西伯利亚 OAO 公司	Wheat starch and glucose syrup equipment. 小麦淀粉和葡萄糖浆设备	2013
2	Uzbekistan-Tashkent Glucose company 乌兹别克斯坦塔什干 Glucose 公司	Glucose syrup processing line 全套葡萄糖浆生产线	2014
3	Bulgaria-Sophia 保加利亚-Sophia	High fructose corn syrup(F-42)equipment 果葡糖浆 (F-42) 设备	2015
4	Bangladesh-Dacca T.K. Group of Industries 孟加拉国-达卡 T.K Group of Industries 公司	Corn Starch glucose syrup equipment 玉米淀粉与葡萄糖浆设备	2016
5	South Africa-Marketing Works cc Trading 南非昆斯顿 Marketing Works cc Trading 公司	Potato starch processing line 土豆淀粉生产线	2016
6	Malaysia-Pahang Bio Starch Industries Worldwide Sdn Bhd 马来西亚彭亨州 Bio 淀粉厂	Cassava Starch Processing Line 木薯淀粉生产线	2017
7	Nigeria – Abia VON BRIDGELAND NIG LTD 尼日利亚-阿比亚州淀粉厂	Cassava Starch Processing Line 木薯淀粉生产线	2017

Chairman Zhang is Investigating Client's Worksite



Our Henan Lima Company Packing and Delivering

